

[PRODUCT SHEET]

Product: DURAalarm

Web based alarm management with graphical location presentation

Compliant with all Ascom systems (DECT, IP-DECT, WiFi, Paging)

Operates on highly reliable embedded Java Server, OJS



DURAalarm PERSONAL ALARM MANAGEMENT

DURAalarm is a suite of mission-critical alarm and message management applications.

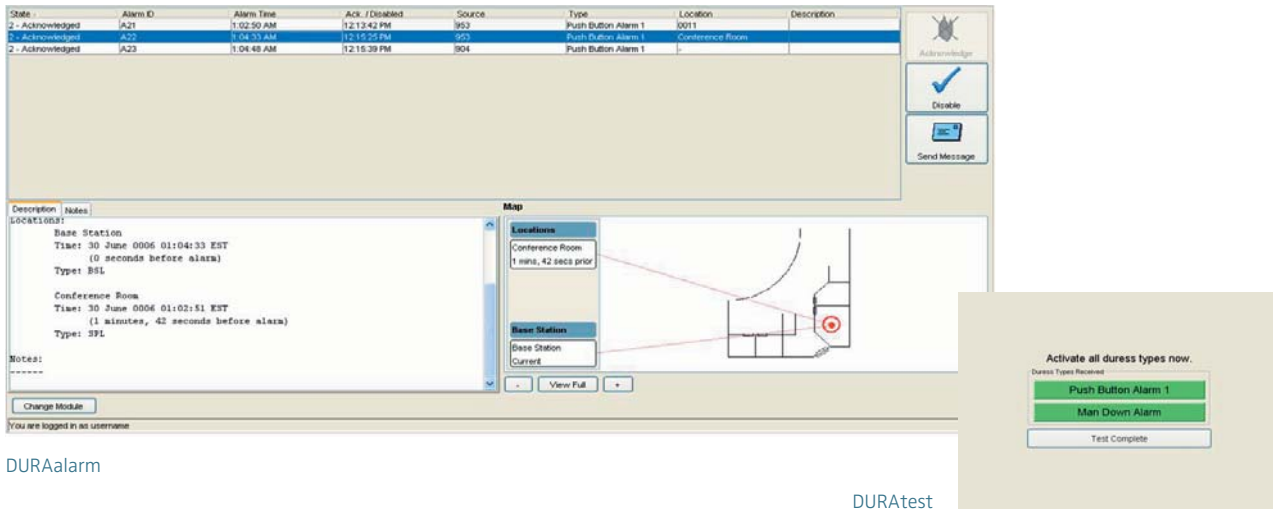
DURAalarm enables LAN/WAN connected users with a web browser to view in real time, via text and graphical information, all alarms from wireless handsets, wired alarm buttons and management systems.

When acknowledging an alarm users can add case notes for management purposes. All alarms can be sent simultaneously to handheld devices so that emergency response team members are instantly notified of crisis situations. All alarms are date/time stamped and logged. To ensure that an alarm is attended to, unacknowledged alarms are escalated to other DURAalarm users.

Features:

- Real time alarm management
- Map presentation with alarm location
 - Base station, Locator and fixed device locations
- Alarm pop-ups (even when not using DURAalarm)
 - Map or Text alarm pop-ups
- Accept / Reject tagging and alarm escalation
- Text and speech alarm notifications on handheld devices
- Unlimited devices and device groups
- Unlimited users and user zones
- Map watermarking for easy map recognition
- Short keys for quick navigation
- Resilient LINUX based appliance – no moving parts
- No software installations required – fully web based
- Logging of all alarm activity

PRODUCT SHEET: DURAAalarm]



DURAAalarm

DURAtest

DURAtest

DURAtest enables LAN/WAN connected users to regularly test their handheld devices so that they can confidently go about their business knowing that their unit works and that they know how to use their unit in times of stress and panic. All testing is time stamped and logged for reporting and analysis purposes.

Features:

- Real-time testing of handheld units
- Simultaneous handset testing (from different PCs)
- Bypass DURAAalarm while in test mode
- Real-time visual display of test alarms generated
- Records user name of staff performing test
- Automatic timeout
 - Handsets do not remain in test mode indefinitely
- Resilient LINUX based appliance – no moving parts
- No software installations required – fully web based
- Logging of all testing activity

Ascom

Wireless Solutions

P.O. Box 8783 SE-402 76 Göteborg, Sweden
 T +46 31 55 93 00 | F +46 31 55 20 31
www.ascom.com/ws