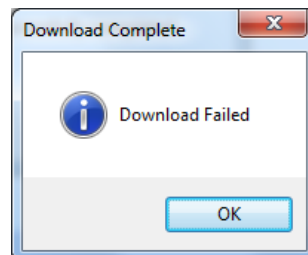
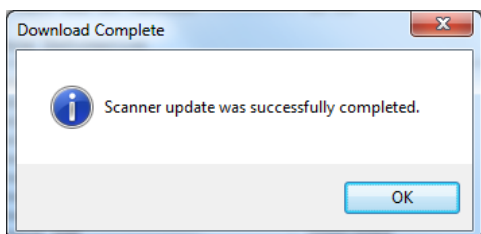


1. After the upgrade is completed per the Assistant User Guide, you will receive a “download Complete” message stating the download was successful or failed.



2. Click OK
3. Click the icon “Disconnect Scanners”
4. Click the icon “Detect Scanners”
5. Once the Scanner is detected, view the “Selected Scanner Information” window and verify the Scanner has the following versions highlighted below within the “Software Information” section:

The latest firmware for the LTE EX scanner Software Information (dated Aug 2011):

Embedded Software Version.....: 03.00.00.05
Boot Software Version.....: 03.12.00.00
DSP Software Type.....: 16
DSP Software Version.....: 03.00.00.45
Clock Card Emb SW Version.....: 12.10

6. If these three versions match, the Scanner has been upgraded successfully